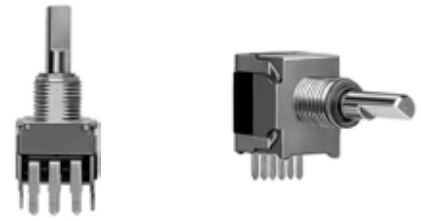


MRP16 – 16 Position Decode Switch
Binary - Encoding

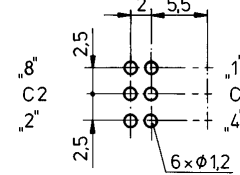
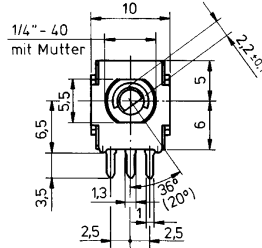
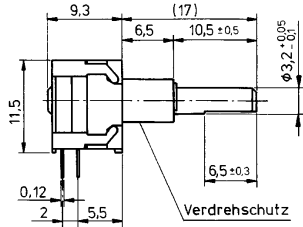
High-precision sliding type encoder
16 Switching positions, without endstop
Absolute encoding
Ratings: 10 V DC - max. 2 mA



MRP16S (vertical design) MRP16L (horizontal design)

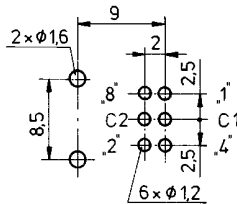
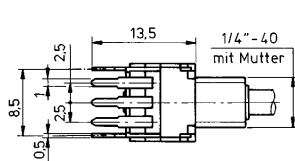
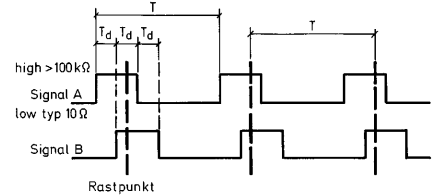
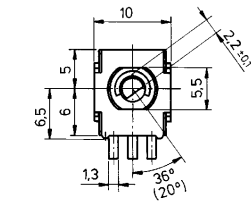
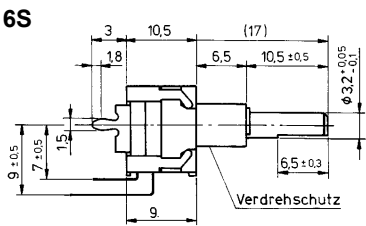
Please note: The specification and information in this datasheet cannot consider all special demands that are caused by the application. Because of this, they are no general description of the properties of the product. Megauto does not assume any responsibility for damages due to improper application of our products. The user has to ensure by its own, that the products used are suitable for his application. Megauto does not warrant the reproducibility of published applications.

MRP16L



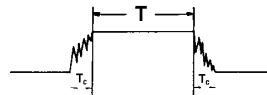
circuit board design

MRP16S



all dimensions in mm

100% contacting by double wiper
Contact bounce: see figure
Typ. contact breaks at Tc-5ms (60 rpm)



Position	S1		S2	
	1	2	3	4
1				
2	●			
3			●	
4	●		●	
5		●		
6	●	●		
7		●	●	
8	●	●	●	
9		●		●
10	●			●
11			●	●
12	●		●	●
13		●		●
14	●	●		●
15		●	●	●
16	●	●	●	●

MECHANICAL CHARACTERISTICS

Mechanical angle	360° continuous
Number of detent	16 (20° ± 1,5°)
Detent torque (Ncm)	4
Operating life	200.000
Bearing type	sleeve bearing
Protection class	IP44
Operating temperature (°C)	(90% humidity) -10°C to +55°C

ELECTRICAL CHARACTERISTICS

Contact resistance	connected typ. <10 Ω disconnected typ. >100 kΩ
--------------------	---

MATERIAL

Housing	zinc die-cast/plastics
Shaft	brass alloy
Connectors	Cu-Be silver-plated
Bushing	zinc die-cast

ASSEMBLY

Tightening torque of the nut typ.	40 Ncm
Manual soldering:	260°C ±5°C/5 ±1 sec.

Application: Miniature encoder for different kinds of level control, tuning and timer setting in audio-visual equipment, simply household electric appliances, radio equipment, communications equipment, etc.

ORDERING INFORMATION

